

Community Services for Children Provider Link Newsletter ~ ELRC Region 16 August 2025

Serving Bucks County

To distribute this newsletter to others, copy and share this link:

Region 16 Updates

Keystone STAR Movements

The following programs have demonstrated their commitment to quality by moving to a higher STAR level from April through June 2025.



Congratulations to the providers who have moved to a STAR 4:

- SMG Clubhouse
- Alphabet Childcare
- RCYMCA Quakertown
- Kindercare Learning Center, Bensalem

Region 16 Provider Supports

Bucks County Directors Network

The Bucks County Directors' Network meetings are the best way to stay connected to all things Early Childhood! Each month, Quality Coaches and partner agencies from across the county and state deliver news and updates. Participating directors find great value in having the opportunity to network. During these gatherings, there is always time to have meaningful conversations with other professionals who share the same passion, vision and even challenges in meeting the demands of providing high-quality childcare. Quality Coaches are there to talk about STARS, OCDEL news, grants, training opportunities and much more. Representatives from a wide variety of agencies routinely discuss topics that include certification regulations, early intervention, mental health services,



staffing, recruitment, to name a few. there to everyday classroom strategies and share opportunities.

So, if you've never been to a Bucks County Directors' Network meeting, maybe it's time to give it a try! Meetings are held monthly and rotate between in-person and virtual. New participants will be entered into a raffle to win something special.

Our next meeting will be held via TEAMS, on Wednesday, August 13th at 1:00 PM. Our Quality Coach topic for August is "Planning for Seasonal or Thematic Activities." Please go to the Coaches' Calendar to register.

JOIN US . . . GET INSPIRED ... NETWORK . . . LEARN . . . SHARE!

Quality Coach Community Days and Virtual Office Hours

Your Quality Coaches are here for you! Community Days are scheduled to assist directors who may have questions, need encouragement, or are looking for new ideas. Coaches will meet you in a friendly and nurturing environment to encourage progress towards your unique goals. Schedule a time to meet with your Keystone STARS Quality Coach at convenient locations across the county. Or if you prefer, check out Virtual Office Hours. Please see the Coaches' Calendar for locations, dates and times.

- [Coaches Calendar](#)

FREE Summer Story Time to Support Social and Emotional Development

The Prevention Education department at A Woman's Place are offering FREE social emotional learning presentations to your classroom. "A Bowl Full of Hearts" is designed to provide children with information and skills for recognizing, building, and maintaining healthy friendships. This 30-minute interactive story time meets PA Learning standards.

See this [flyer](#) or contact Emma Gobora at 215-343-9241 ext. 220 for more information.

Rapid Response Team

The Rapid Response Team provides prompt support in the event a child is at risk of suspension or expulsion. It is a short-term, collaborative approach, designed to connect families and providers with existing tools and resources. Supports are customized to fit a child's or teacher's needs.



Requests can be made using this [RRT Referral form](#). Referrals are processed on a first come, first served basis and we ask that providers prioritize one child referral at a time. One of the goals of the RRT is that strategies and supports will be used across classrooms at the provider so that all children and staff will benefit from these supports.

Before submitting a referral, please discuss with the parent as parental consent is required. Child observations, screenings, and parent conferences should also have been completed so that you can provide the referral coordinator with detailed information regarding the case.

If you have any questions regarding the RRT supports, please reach out to your Quality Coach.

2025 ELRC Fall Conference

Save the date for our upcoming Fall 2025 conference titled "Building Your Toolbox". Sessions will focus on Social and Emotional Development and Quality Classroom Practices. Registration information is coming soon. This conference will include 6 hours of professional development, catered lunch, and resources, and is provided at no cost to you!



Please consider sending all staff to this valuable learning opportunity.

*Monday October 13, 2025
8:00 AM - 4:00 PM*

*Health & Wellness Center
847 Easton Rd
Warrington, PA 18976*

FREE Community Baby Shower

BCHIP and St. Lukes University Health Network are hosting a free event for all new or expectant mothers. The event will feature refreshments, games, and a chance to win a new car seat. Resources on pregnancy, infant health and development, and more will be available. The event will be held on August 20th in Quakertown. Childcare providers are asked to share the flyer with their families.

- [Baby Shower Flyer](#)
-

ELRC Updates

CCW Reminders

The ELRC financial books have been closed for the fiscal year July 1, 2024 - June 30, 2025. Payments cannot be made on invoices for care prior to July 1.



School Age Flip - Back to School

The ELRC is preparing for the change in schedules for school-age children. The school age flip from full-time to part-time for all eligible school age enrollments, will take place on **Monday, September 1st**. This will affect your attendance reporting and payments.

Watch for correspondence from the ELRC regarding your School Age Fall enrollments.

The ELRC appreciates your support in communicating changes in schedules for your CCW enrolled families as well. Please remind them to contact their Family Specialist with any changes to schedules.

In addition, please check the August & September invoices and make any

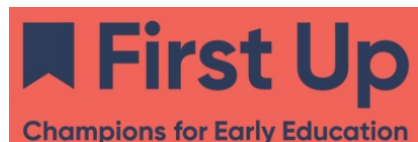
necessary corrections to schedules.

Payment Schedule 2025-2026

The CCW Payment schedule for 2025-2026 has been released. Please download a copy and take note of invoice due dates and payment dates.

- [2025-2026 Payment Schedule](#)
-

Supports for Spanish Speaking Providers



Invite a Legislator!

Invite your local legislator to visit during family events, move up days or read to the children this summer. Providers that want to invite a legislator to visit, could earn an incentive from \$160 - \$200 to be used for their program through Leadership in Action. For questions you can reach out to Rosanna Matos at rosanna.matos@firstup.org. Click the links below to learn more about Leadership in Action.

- [Leadership in Action](#)
- [Programa Liderazgo en Acción](#)

Summer Updates

There will be no Roundtable or SEPECC meetings for July and August. Roundtable meetings will resume on **September 18, 2025**. Bookmark this [link](#).

Rapid Response Team Tip of the Month

Supervision & Ratios

As you begin to plan your classroom enrollments and staffing for the Fall, be sure all rooms are fully covered to meet not only the ratios required, but the correct staffing components. Aides cannot be left alone with children so creative scheduling and combining of classrooms in the beginning and end of the day may be necessary. It is also important to factor in emergencies like staff illness or a child who needs temporary one on one attention. A floater or administrative support person who can help cover classrooms is necessary, especially for larger programs.

Take a look at this tool for [supervision and staffing patterns](#) and use it to assist in completing your staffing plans for the school year.

Understanding School Age Child Development and Responding Appropriately to Behaviors

This event will share developmental traits of 5- 10 year olds in the domains of Physical, Language/cognitive and Social Emotional, and ways to support children in each phase of growth. The format is a self-paced auditory event that will have three knowledge checks for understanding.

Style: Web-based Auditory Only PD. Take the course at a time that suits you.

Length: 1 hour (PQAS Awarded upon full completion of course). Meets DHS requirement for annual 1-hour child development training.

Register now!

www.papdregistry.org/register.aspx?evid=384894



Fully Funded CDA Cohort

Lehigh Carbon Community College is forming CDA cohorts to begin this Fall. These cohorts are following an apprenticeship model that includes credit for time worked in your program! The cohort is also fully funded for those who qualify and information sessions are available to answer all of your questions.

Directors, share this information with your staff and encourage attendance for those who do not yet have a CDA or higher ed credits in ECE!

Click on this [flyer](#) for more information including the dates and registration details for the info sessions.

Free Professional Development *Little Conversations, Big Connections*

Join this webinar series sponsored by the Bureau of Early Intervention Services and Family Supports.



This month, the 1.5 hour webinar will be full of early language and literacy resources that you can use right away: social communication, the use of gestures, and the importance of back-and-forth conversations. This will all be framed by the power of relationships.

August 6, 2025, 1:00 - 2:30 PM

Presenters: OCDEL Early Language and Literacy Team

Credits: Infant Toddler Training Hours, Act 48 Clock Hours, PQAS hours

Registration Information: <https://www.surveymonkey.com/r/9JMQV6N>

For general registration information and questions, please contact Molly Martz at mmartz@pattan.net

For content related information and questions, please contact Jodie Holmberg at

NAEYC Accreditation Standards Updates

In March 2025, the National Association for the Education of Young Children (NAEYC) launched a brand-new Program Accreditation system. NAEYC is focused on a national standard of high-quality early care and education programs for each and every child.

The updated Early Learning Program Quality Assessment & Accreditation system allows programs to choose a level of engagement that meets their evolving needs. This new model features three progressive tiers, ensuring that more programs can engage and grow their commitment to quality.



Recognition

A foundational tier that establishes key policies and structures to build a high-quality learning environment.



Accreditation

A full accreditation tier that includes quality assurance measures and a review of policies, structures, and practices with potential site visits.



Accreditation+

The highest accountability tier, including mandatory site visits, ongoing review, and additional quality benchmarks.

The Accreditation+ tier is eligible for the Keystone STAR Alternative Pathway STAR 4 designation. Recognition and Accreditation tiers will be designated at a STAR 1 but can work with their Quality Coach to increase their STAR level using the Keystone STARS Performance Standards.

Providers can read the full announcement here: [ELRC 25-01: Changes to the National Association for the Education of Young Children \(NAEYC\) Accreditation Standards and System and Implications for Keystone STARS Alternate Pathways - The Pennsylvania Key](#)

School Age Credential Program Enrolling for Fall 2025



Northampton County Community College is currently enrolling for their Fall 2025 School Age Credential. Tuition Assistance is available for those who qualify. Instruction is done remotely and students will earn 9 college credits at the completion of the program.

Click [here](#) for more information.

Health & Safety

ECELS Health & Safety Newsletter

Early Childhood Education Linkage System (ECELS) publishes a monthly newsletter full of valuable health & safety tips, and resources for staff, children and families.



Click [here](#) to view their newsletters and download the most recent edition.

Virtual Office Hours

You can now connect with ECELS staff during office hours. ECELS staff can discuss any questions and concerns you may have, pertaining to healthy childcare practices. Please register for an appointment for their office hours by following this [link](#). After you register, you will receive an email confirmation with your appointment information.

For a full list of topics visit their [webpage](#).

Annual Immunization Survey

The PA Department of Health requests all licensed child care providers complete the Annual Child Care Immunization Survey to meet the immunization reporting requirements outlined in 28 Pa. Code § 27.77 (a)(4) Immunization requirements for children in child care group settings.

The PA Dept. of Health asks all licensed child care providers to complete and submit this survey by September 19, 2025.

The following resource materials are available to help with reviewing immunization records and completing the survey:

- [Vaccine Identification document](#)
- Immunization Tracking Sheets are available as [PDF](#) or [Excel](#) document

The [survey](#) has changed format which may look longer, but contains the same number of questions. Before taking the survey, completing the tracking sheets will greatly help complete the survey more efficiently.

Discover Your Teeth

Here is some information about teeth for you to share with children and families. Click [here](#) to view or print a larger copy .

Discover Your Teeth

TOOTH ANATOMY

Enamel

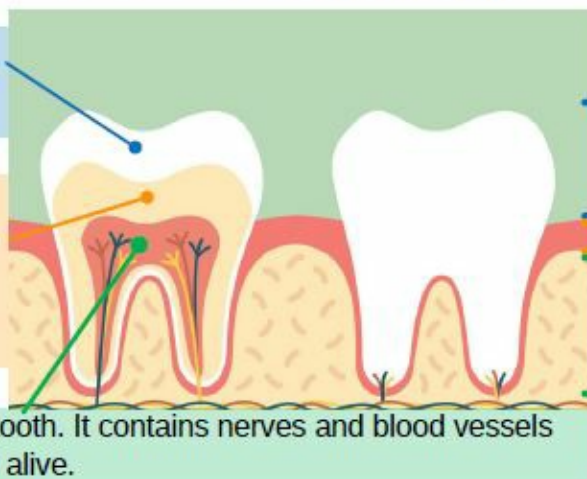
Visible, protective covering of the tooth.

Dentine

Yellowish part under the enamel. It makes up most of the tooth structure.

Pulp

The "heart" of the tooth. It contains nerves and blood vessels that keep the tooth alive.



Crown

Part of tooth above the gum.

Gum

Part of tooth under the gums and jawbone.

FOUR TYPES OF TEETH

Premolars



Mash Food

Incisors



Bite Food

Molars



Grind Food

Canines



Tear Food

FUN FACTS

- Teeth are the hardest part of your body
- Teeth are as unique to you as your fingerprint
- Tooth decay is preventable - **brush 2x a day for 2 minutes!**

Copyright © 2022 Kids Smiles, All rights reserved.

Want to add staff or other members of your team to this newsletter? Email estair@cscinc.org and specify which Regional Newsletter you would like. Requests will be added to next month's distribution.

Connect with us



Community Services for Children | 1520 Hanover Ave | Allentown, PA 18109 US

[Unsubscribe](#) | [Update Profile](#) | [Constant Contact Data Notice](#)



Try email marketing for free today!