

Community Services for Children Provider Link Newsletter ~ ELRC Region 11 August 2025

Serving Bradford, Sullivan, Wyoming, Luzerne, Columbia & Montour Counties

To distribute this newsletter to others, copy and share this link:

Region 11 Updates

Keystone STAR Movements

The following programs have demonstrated their commitment to quality by moving to a higher STAR level from April through June 2025.



Congratulations to the provider who has moved to a STAR 2:

- Sunny Side Daycare

Congratulations to the provider who has moved to a STAR 3:

- Happy Place Daycare

Congratulations to the providers who have moved to a STAR 4:

- Country Charm Early Learning Center
- Building Blocks Early Learning Academy

Region 11 Provider Supports

Director's Network Roundtable

The Region 11 Director's Network Roundtable meets monthly to share ideas and resources and to build partnerships in the childcare community. Each meeting will include a Community of Practice for leadership. Topics will focus on strategies for reducing suspension and expulsion, classroom management, and behavior management through the lens of the director. We hope you will join us



for our next meeting, Thursday, August 21st at 10:00 am for “Sensory Processing: Child Care Setting Strategies”, with guest speaker Occupational Therapist, Briget Rischawy, from Beyond Behavior Consulting. Click [here](#) for details and to join the discussion.

Teacher’s Community of Practice

This is an opportunity for teachers to learn about classroom and behavior management. Communities of Practice allow teachers to share ideas, ask questions, and learn new strategies to implement. The Teachers’ Community of Practice is scheduled for the second Wednesday of each month, August through May, via Teams. Join us on Wednesday, August 13th from 2:00 - 3:00 pm for “Creating a Positive Classroom Culture”. Click [here](#) to view the flyer with all dates, topics and links to join.

Quality Coach Monthly Calendar

Print out a copy of the Region 11 Quality Coach Monthly Calendar for a quick reference to all regional support activities. Remember, your Quality Coach has office hours scheduled on the calendar and is available to meet with you and provide any support needed. Click [here](#) to view this month’s calendar.



Teachers’ Community of Practice *Reflect, Refresh, and Re-engage!*

Thank you to all those who attended the Teacher’s Community of Practice! The Community of Practice focused on teaching practices and classroom management strategies that support behavior management, engaging children in learning, and connecting with families. Attendees participated in discussions, shared resources, and networked with other educators.

We appreciate all who attended the sessions. Those who attended all six sessions received a bag of resources! A huge shout out goes to the following programs who had teachers attend all 6 sessions.

- Susquehanna Valley Child Development Center
- Curious Kids Learning Center
- Little People Day Care School
- Magic World Child Care Center

Looking forward... The Community of Practice will be held virtually on the second Wednesday of each month from August to May. We understand getting teachers out of the classroom is a challenge, but sending one person who can go back and share information with the rest of the staff will benefit everyone in the program. We will be adding a couple of in-person meetings at our Wilkes-Barre office to share resources and reflect on progress. Quality Coaches are also available to meet with teachers in their classroom to model strategies and share strategies specific to their needs.

The sessions begin on August 13th from 2:00-3:00 via Teams. See the [flyer](#) for the topics and links to each session. We look forward to seeing you!

The Rapid Response Team provides prompt support in the event a child is at risk of suspension or expulsion. It is a short-term, collaborative approach, designed to connect families and providers with existing tools and resources. Supports are customized to fit a child's or teacher's needs.



Requests can be made using this [RRT Referral form](#). Referrals are processed on a first come, first served basis and we ask that providers prioritize one child referral at a time. One of the goals of the RRT is that strategies and supports will be used across classrooms at the provider so that all children and staff will benefit from these supports.

Before submitting a referral, please discuss with the parent as parental consent is required. Child observations, screenings, and parent conferences should also have been completed so that you can provide the referral coordinator with detailed information regarding the case.

If you have any questions regarding the RRT supports, please reach out to your Quality Coach.

2025 ELRC Fall Conference

Save the date for our upcoming Fall 2025 conference titled *"Beyond Behaviors: Creating Calm, Connected Classrooms"*. Sessions will focus on Social and Emotional Development and Quality Classroom Practices. Registration information is coming soon. This conference will include 6 hours of professional development, catered lunch, and resources, and is provided at no cost to you!



Please consider sending all staff to this valuable learning opportunity.

*Monday October 13, 2025
8:00 AM - 4:00 PM*

*Hilton Scranton
100 Adams Ave
Scranton, PA 18503*

Hazleton Wellness Fair

This is a walk-up clinic on August 28th for quick medical consults and advice, featuring doctors, nurses, dentists, social workers, drug/alcohol services, emergency housing services, mental health services and nutrition advisors. Screenings and vaccinations will also be available on site. Please click [here](#) for the flyer with details and share the information with your families in the Hazleton area.

Community Resource Spotlight *Children's Service Center*

Children's Service Center is committed to the wellness of young people in the community. Their services are designed to meet the individualized needs of children,



adolescents, and their families. Assessment, Crisis, and Referral Services are staffed 24 hours a day, seven days a week, for initial assessment and referral. Children's Service Center offers a variety of services across a continuum of care from least restrictive to residential. For more information regarding these services see the attached **brochure** or visit their website at www.cscwv.org.

335 South Franklin Street
Wilkes-Barre, PA 18702
570-825-6425 or 1-877-433-5112

ELRC Updates

CCW Reminders

The ELRC financial books have been closed for the fiscal year July 1, 2024 - June 30, 2025. Payments cannot be made on invoices for care prior to July 1.



School Age Flip - Back to School

The ELRC is preparing for the change in schedules for school-age children. The school age flip from full-time to part-time for all eligible school age enrollments, will take place on **Monday, September 1st**. This will affect your attendance reporting and payments.

Watch for correspondence from the ELRC regarding your School Age Fall enrollments.

The ELRC appreciates your support in communicating changes in schedules for your CCW enrolled families as well. Please remind them to contact their Family Specialist with any changes to schedules.

In addition, please check the August & September invoices and make any necessary corrections to schedules.

Payment Schedule 2025-2026

The CCW Payment schedule for 2025-2026 has been released. Please download a copy and take note of invoice due dates and payment dates.

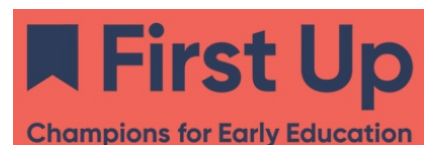
- [2025-2026 Payment Schedule](#)

Supports for Spanish Speaking Providers

Invite a Legislator!

Invite your local legislator to visit during family events, move up days or read to the children this summer. Providers that want to invite a legislator to visit, could earn an incentive from \$160 - \$200 to be used for their program through Leadership in Action. For questions you can reach out to Rosanna Matos at rosanna.matos@firstup.org. Click the links below to learn more about Leadership in Action.

- [Leadership in Action](#)
- [Programa Liderazgo en Acción](#)



Summer Updates

There will be no Roundtable or SEPECC meetings for July and August. Roundtable meetings will resume on **September 18, 2025**. Bookmark this [link](#).

Rapid Response Team Tip of the Month

Supervision & Ratios

As you begin to plan your classroom enrollments and staffing for the Fall, be sure all rooms are fully covered to meet not only the ratios required, but the correct staffing components. Aides cannot be left alone with children so creative scheduling and combining of classrooms in the beginning and end of the day may be necessary. It is also important to factor in emergencies like staff illness or a child who needs temporary one on one attention. A floater or administrative support person who can help cover classrooms is necessary, especially for larger programs.

Take a look at this tool for [supervision and staffing patterns](#) and use it to assist in completing your staffing plans for the school year.



The graphic features a blue and white color scheme. On the left, a blue banner contains the title 'Understanding School Age Child Development and Responding Appropriately to Behaviors'. Below this, text describes the course content: 'This event will share developmental traits of 5- 10 year olds in the domains of Physical, Language/cognitive and Social Emotional, and ways to support children in each phase of growth. The format is a self-paced auditory event that will have three knowledge checks for understanding.' Further down, it specifies 'Style: Web-based Auditory Only PD. Take the course at a time that suits you.' and 'Length: 1 hour (PQAS Awarded upon full completion of course). Meets DHS requirement for annual 1-hour child development training.' At the bottom, a white button with blue text says 'Register now!' followed by the URL www.papdregistry.org/register.aspx?evid=384894. On the right side, there are three circular inset photos showing diverse groups of smiling school-age children.

Understanding School Age Child Development and Responding Appropriately to Behaviors

This event will share developmental traits of 5- 10 year olds in the domains of Physical, Language/cognitive and Social Emotional, and ways to support children in each phase of growth. The format is a self-paced auditory event that will have three knowledge checks for understanding.

Style: Web-based Auditory Only PD. Take the course at a time that suits you.

Length: 1 hour (PQAS Awarded upon full completion of course). Meets DHS requirement for annual 1-hour child development training.

Register now!

www.papdregistry.org/register.aspx?evid=384894

Fully Funded CDA Cohort

Lehigh Carbon Community College is forming CDA cohorts to begin this Fall. These cohorts are following an apprenticeship model that includes credit for time worked in your program! The cohort is also fully funded for those who qualify and information sessions are available to answer all of your questions.

Directors, share this information with your staff and encourage attendance for those who do not yet have a CDA or higher ed credits in ECE!

Click on this [flyer](#) for more information including the dates and registration details for the info sessions.

Free Professional Development

Little Conversations, Big Connections

Join this webinar series sponsored by the Bureau of Early Intervention Services and Family Supports.



This month, the 1.5 hour webinar will be full of early language and literacy resources that you can use right away: social communication, the use of gestures, and the importance of back-and-forth conversations. This will all be framed by the power of relationships.

August 6, 2025, 1:00 - 2:30 PM

Presenters: OCDEL Early Language and Literacy Team

Credits: Infant Toddler Training Hours, Act 48 Clock Hours, PQAS hours

Registration Information: <https://www.surveymonkey.com/r/9JMQV6N>

For general registration information and questions, please contact Molly Martz at mmartz@pattan.net

For content related information and questions, please contact Jodie Holmberg at jholmberg@pattan.net.

NAEYC Accreditation Standards Updates

In March 2025, the National Association for the Education of Young Children (NAEYC) launched a brand-new Program Accreditation system. NAEYC is focused on a national standard of high-quality early care and education programs for each and every child.

The updated Early Learning Program Quality Assessment & Accreditation system allows programs to choose a level of engagement that meets their evolving needs. This new model features three progressive tiers, ensuring that more programs can engage and grow their commitment to quality.



Recognition

A foundational tier that establishes key policies and structures to build a high-quality learning environment.



Accreditation

A full accreditation tier that includes quality assurance measures and a review of policies, structures, and practices with potential site visits.



Accreditation+

The highest accountability tier, including mandatory site visits, ongoing review, and additional quality benchmarks.

The Accreditation+ tier is eligible for the Keystone STAR Alternative Pathway STAR 4 designation. Recognition and Accreditation tiers will be designated at a STAR 1 but can work with their Quality Coach to increase their STAR level using the Keystone STARS Performance Standards.

Providers can read the full announcement here: [ELRC 25-01: Changes to the National Association for the Education of Young Children \(NAEYC\) Accreditation Standards and System and Implications for Keystone STARS Alternate Pathways - The Pennsylvania Key](#)

School Age Credential Program Enrolling for Fall 2025



Northampton County Community College is currently enrolling for their Fall 2025 School Age Credential. Tuition Assistance is available for those who qualify. Instruction is done remotely and students will earn 9 college credits at the completion of the program.

Click [here](#) for more information.

Health & Safety

ECELS Health & Safety Newsletter

Early Childhood Education Linkage System (ECELS) publishes a monthly newsletter full of valuable health & safety tips, and resources for staff, children and families.



Click [here](#) to view their newsletters and download the most recent edition.

Virtual Office Hours

You can now connect with ECELS staff during office hours. ECELS staff can discuss any questions and concerns you may have, pertaining to healthy childcare practices. Please register for an appointment for their office hours by following this [link](#). After you register, you will receive an email confirmation with your appointment information.

For a full list of topics visit their [webpage](#).

Annual Immunization Survey

The PA Department of Health requests all licensed child care providers complete the Annual Child Care Immunization Survey to meet the immunization reporting requirements outlined in 28 Pa. Code § 27.77 (a)(4) Immunization requirements for children in child care group settings.

The PA Dept. of Health asks all licensed child care providers to complete and submit this survey by September 19, 2025.

The following resource materials are available to help with reviewing immunization records and completing the survey:

- [Vaccine Identification document](#)
- Immunization Tracking Sheets are available as [PDF](#) or [Excel](#) document

The [survey](#) has changed format which may look longer, but contains the same number of questions. Before taking the survey, completing the tracking sheets will greatly help complete the survey more efficiently.

Discover Your Teeth

Here is some information about teeth for you to share with children and families. Click [here](#) to view or print a larger copy .

Discover Your Teeth

TOOTH ANATOMY

Enamel

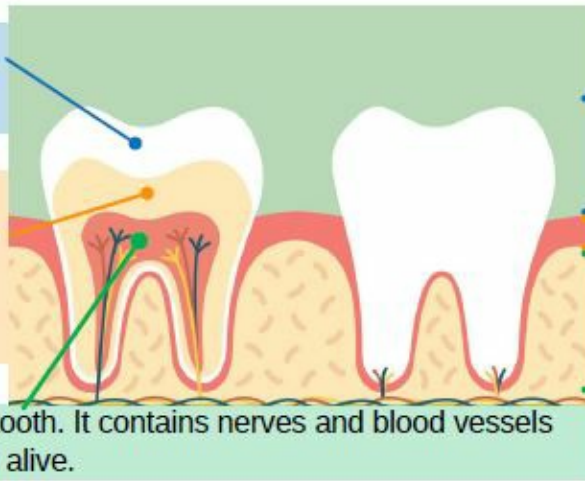
Visible, protective covering of the tooth.

Dentine

Yellowish part under the enamel. It makes up most of the tooth structure.

Pulp

The "heart" of the tooth. It contains nerves and blood vessels that keep the tooth alive.



Crown

Part of tooth above the gum.

Gum

Part of tooth under the gums and jawbone.

FOUR TYPES OF TEETH

Premolars



Mash Food

Incisors



Bite Food

Molars



Grind Food

Canines



Tear Food

FUN FACTS

- Teeth are the hardest part of your body
- Teeth are as unique to you as your fingerprint
- Tooth decay is preventable - **brush 2x a day for 2 minutes!**

Copyright © 2022 Kids Smiles, All rights reserved.

Want to add staff or other members of your team to this newsletter? Email estair@cscinc.org and specify which Regional Newsletter you would like. Requests will be added to next month's distribution.

Connect with us



Community Services for Children | 1520 Hanover Ave | Allentown, PA 18109 US

[Unsubscribe](#) | [Update Profile](#) | [Constant Contact Data Notice](#)



Try email marketing for free today!