

---

## Community Services for Children Provider Link Newsletter ~ ELRC Region 14 July 2024

Serving Lehigh & Northampton counties

---

To distribute this newsletter to others, copy and share this link:

---

### Region 14 Updates

---



The ELRC offices will be closed on Thursday, July 4th. We will reopen on Friday, July 5th. Wishing you and your family, a safe and healthy holiday!

---

#### The ELRC is Celebrating its 6th anniversary!

We thank you for your partnership, collaboration and work with the families and children in your care. We are looking forward to continuing to serve you and the community as we move into the 2024-2025 fiscal year.



---

#### Kick Off Meetings - Save the Date Rapid Response Team

The ELRC will be hosting the annual Kick Off Meetings in September with a focus on the implementation of the Rapid Response Team. The Rapid Response team is designed to support the child care provider who is struggling with the challenging behaviors of a child who is at immediate risk of suspension or expulsion. The team will also provide supports and referrals to the family and child.

Representation from each child care provider at one of these meetings is crucial to learn about this project and how you can access it's supports. Please save the following dates and times and keep an eye out for registration information to be released soon!

*Tuesday, September 17*

*10:00 am - 12:30 pm*

*OR*

*6:30-8:30 pm*

*Allentown*

*Friday, September 20*

*10:00 am - 12:30 pm*

*Easton*

*Wednesday, September 25*

*12:30 - 3:00 pm*

*Allentown*

---

## CDA Apprenticeship

Northampton Community College is offering a CDA Apprenticeship program beginning in September. This is an amazing opportunity for program staff to earn 9 ECE credits and a CDA completely FREE! They are also able to take the courses online in the evening and complete the work at their own pace.

See the flyer below and contact Natasha Kershner at [kershner@northampton.edu](mailto:kershner@northampton.edu) for more information.

- [CDA Apprenticeship Flyer](#)

---

## Region 14 Provider Supports

### ELRC 14 Director's Network

Join us on July 9<sup>th</sup> at 1:00 pm for our next Director's Network Meeting. This month we will have a time for open discussion to talk about any questions or topics you would like to discuss.

- [Director's Network - July 2024](#)

### Quality Coach Office Days

Are you thinking about moving up in STARS and need some extra assistance? Do you need help with your Keystone STARS renewal or designation?

Your Quality Coach is here to help! Quality Coaches are available to answer questions throughout the week and are in the office weekly to meet one on one to support you through your STARS journey. Click on the flyer below for availability and to schedule a meeting.

- [Quality Coach Office Days](#)



---

## ELRC Updates

---

## CCW Reminders



### Outstanding Invoices

Providers must submit all outstanding invoices no later than July 15th. While other months allow for a 60 day window to submit invoices, due to the close of the ELRC fiscal year, all invoices must be received by 7/15. Invoices received beyond July 15th will not be paid.

### School Age Flip

The School Age Flip occurred on June 14. As a reminder, providers who have accepted the blended rate have been paid a higher part-time rate which includes 25 full-time days throughout the school year. This accounts for any gaps that may have occurred between your local school district end date and school age flip date.

### 40 day Absence Policy

Child Care Works will pay for 40 absences per child for the year. These absences reset back to zero on 7/1/24.

### Payment Schedule 2024-2025

The CCW Payment schedule for 2024-2025 has been released. Please download a copy and take note of invoice due dates and payment dates.

- [2024-2025 Payment Schedule](#)



## Child Care Works Provider Agreements

All providers received a copy of the new provider agreement on June 4, 2024. If you have not done so already, please complete and sign new provider agreement that will be effective August 1, 2024. The provider agreement establishes the terms of participation and payment between Community Services for Children and a certified child care provider who provides care to children that participate in Pennsylvania's subsidized child care program, Child Care Works (CCW).

Please print, sign and return the Provider Agreement indicating you are willing to continue to participate in the CCW program to your ELRC at [ELRC14@cscinc.org](mailto:ELRC14@cscinc.org) by July 1, 2024. **If you do not return the new Provider Agreement to the ELRC by July 31, 2024, your Provider Agreement will be terminated.**

Please note, if you are updating your rates on the Appendix C-1, you must also send in a copy of your published rates.

Please contact your Provider Specialist if you have not received a copy of the agreement or if you have any questions.

## ECE Summit - October 28 - 29, 2024

The annual Pennsylvania Early Childhood Education Summit will be back in-person for 2024 at the [Penn Stater Conference Center](#) in State College. Summit will run Monday and Tuesday, October 28 & 29, 2024.

Questions about Summit or suggestions for Keynotes can be sent



to [info@earlychildhoodsummit.org](mailto:info@earlychildhoodsummit.org).

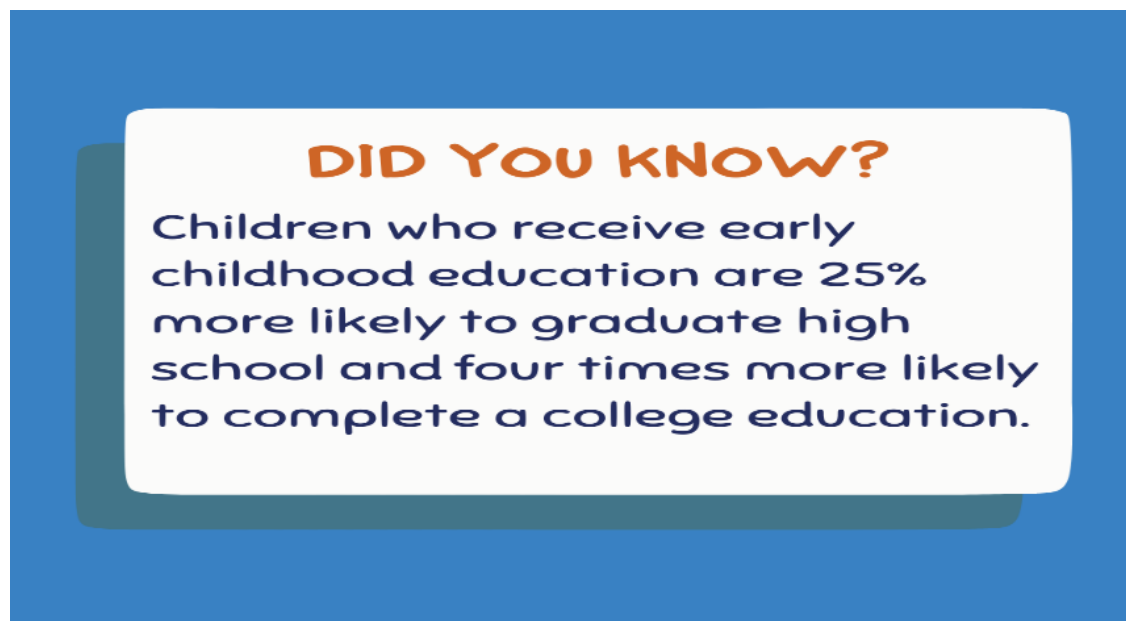
## COMPASS link updated

Effective 6/17/2024, the new link for COMPASS will be [www.compass.pa.gov](http://www.compass.pa.gov) . The old link <https://www.compass.state.pa.us> should redirect to the new link during this transition.

## Did You Know?

As an early childhood professional, you know how important the early years are for a child's development. However, many families and communities members do not know how important quality early learning experiences are for children. Click on the links below for a set of labels that can be used in your enrollment packets, family engagement and community events. Help spread the word!

- [Did You Know Labels](#)



## Asynchronous courses live on the PD Registry Program Observation Instrument Professional Development related to Environment, Interactions, & Classroom Practices

### Foundations of ERS

*English:*

Online Self-Paced: Foundations of the Environment Rating Scale ( ERS), Event ID# 362393

*Spanish/Español:*

Aprendizaje en línea autodirigido: Fundamentos de la escala de calificación del ambiente (ERS, por sus siglas en inglés), Event ID# 367436

### ERS Scale Specific Courses

Online Self-Paced: Early Childhood Environment Rating Scale, Third Edition (ECERS-3), Event ID# 363916

Online Self-Paced School-Age Care Environment Ratings Scale - Updated

(SACERS-U), Event ID# 361129

Online Self-Paced: Foundations of the Family Child Care Environment Rating Scale (FCCERS), Event ID#361814

### Adult-Child Interactions

Online Self-Paced Pennsylvania Foundations of the Classroom Assessment Scoring System (CLASS) - Event ID#361130.

Online Self-Paced: Infant Classroom Assessment Scoring System ® (CLASS ®), Event ID# 362393

### Program Administration, Leadership & Management Practices

Online Self-Paced: PA Foundations of the Business Administration Scale (BAS), Event ID# 368202

### POIs related to Social-Emotional Learning

Online Self-Paced: Social Emotional Learning Program Quality Assessment (SEL PQA), Event ID# 368214

---

## Parent Project Podcast

Community Services for Children has been hosting the Parent Project Podcast to engage families in areas of common concern for parents. Experts provide perspectives on topics of health & safety, mental health, child transition and other important subjects.

Please consider sharing these podcasts with the families in your program!

This month, we are joined by Katie Fries a registered play therapist and owner of [All of You Therapy, LLC](#). She walks listeners through the parental role in creating emotionally healthy kids. Click [here](#) to listen.



# Health & Safety

## Toxic Plant Policy

OCDEL has released [Announcement C-24-01 Guidance to Identifying Toxic Plants in a Child Care Setting](#). This guidance covers policies and procedures providers should implement as it pertains to toxic plants. It also provides information on plant identification, identifying if a plant is toxic, symptoms of contact with a toxic plant, and information on steps to take if a child encounters a toxic plant.

Click on this link for an [on-demand webinar](#) for an overview of this announcement.



## Water Beads

Did you know that water beads are associated with thousands of emergency-department visits every year? Water beads, often sold as toys, in craft kits, as sensory tools, are small, water-absorbing, often colorful balls of super absorbent polymer and can grow 100 times their original size when exposed to water. Water beads should not be used by child care providers.



Water beads can be deadly to babies and small children if ingested, and can lead to choking, internal injuries and even death if left undetected. Water beads inserted into ears can damage ear structures, causing hearing loss and require surgery. The Consumer Product Safety Commission (CPSC) urges parents and caregivers to remove these products from any environment with children. CPSC also urges childcare centers, camps, and schools to avoid these products entirely. If you suspect a child has swallowed a water bead or inserted a water bead into their ear or nose, seek medical treatment right away.

For more information on water beads, visit:

- [Water Beads | CPSC.org](#)
- [Water Beads: Harmful if Swallowed, Put in Ears | HealthyChildren.org](#)
- [Are Water Beads Dangerous? | Poison Control](#)



## Tick Safety

*What should child care providers do when they find a tick on a child?*

Department of Human Services Certification recommends that if a childcare provider finds an embedded tick, they should immediately contact the child's parent or guardian so that next steps can be determined quickly. This is consistent with regulation 132(a). It is advised that a provider

does not remove a tick unless there is written authorization by the parent and the provider has received the appropriate health and safety training to do so. Following proper technique for tick removal can be challenging; even with proper technique, heads can stay attached and need to be dug out, which can be difficult.

---

## Getting Oral Health Care During Pregnancy

Oral health care during pregnancy is important for mom and baby. Getting oral health care, including cleanings, X-rays, fillings, and pain medication, is safe during pregnancy.



### Please share these tips for getting oral health care during pregnancy with families:

- Brushing twice a day with fluoride toothpaste, drinking water throughout the day and eating nutritious foods will help keep you and your baby healthy.
- If your last dental visit was more than six months ago or if you have an oral health problem or concern, make an appointment as soon as possible.
- Getting oral health care during the second trimester is best. During the first trimester, you might have morning sickness. During the third trimester, it can be uncomfortable to lie on your back in the dental chair.
- Tell the dental clinic staff that you are pregnant and your due date. This information will help them provide the best care and keep you comfortable.
- Tell the staff about any changes in your teeth or gums. Also, tell them about all medications, including vitamin and mineral supplements, that you are taking.

---

Want to add staff or other members of your team to this newsletter? Email [estair@cscinc.org](mailto:estair@cscinc.org) and specify which Regional Newsletter you would like. Requests will be added to next month's distribution.

Visit [ELRC Region 14](#)

Community Services for Children | [elrc14@cscinc.org](mailto:elrc14@cscinc.org) | [www.cscinc.org](http://www.cscinc.org)

Connect with us



Community Services for Children | 1520 Hanover Ave | Allentown, PA 18109 US

[Unsubscribe](#) | [Update Profile](#) | [Constant Contact Data Notice](#)



Try email marketing for free today!