



Community Services for Children Provider Link Newsletter ~ ELRC Region 14 November 2023

Serving Lehigh & Northampton counties

To distribute this newsletter to others, copy and share this link:

Region 14 Updates

ELRC Offices Closed

Please note that the ELRC offices will be closed on Friday, November 11th for a staff professional development day. Offices will reopen to the public on Monday, November 13th.

THERE IS
always
SOMETHING TO BE
thankful for

As we take a moment this time of year to reflect on what we are thankful for, know that everyone from the Early Learning Resource Center appreciates all you do for the children and families in your care. In spite of challenges, the ECE community continues to serve children and give them a safe place to be nurtured, to learn and to thrive.



The Early Learning Resource Center would like to welcome the following new programs to our region! We look forward to working with you. ELRC staff are here to assist you with your participation in Child Care Works and Keystone STARS, and to provide you with local resources and referrals.

- Neftali Ortiz De La Cruz
- Caring Learning Center LLC
- Future Child Stars
- St. Elizabeth Pre K
- Immaculate Conception School Preschool
- Notre Dame Church of Bethlehem-Preschool
- Play and Learn Paradise Daycare Center LLC
- Easton Childcare Academy & Learning Center
- Anabel Abreu Rodriguez
- Yomayra Dotel Moreta
- Kendra Leonor Severino
- Indhira Lopez Torres
- Noah's Home Daycare LLC
- Vinco Academy LLC

ELRC Invoicing Update

Starting November 2023, Providers submitting invoices after the 5th of the month will not receive payment until the end of the month following services. As stated in Appendix A, Section D of your Provider Agreement, "The invoice is due to the ELRC by the fifth calendar day of the month following the month child care is provided." Due to the large volume of invoices and the limited time the ELRC has to process these invoices, the ELRC 14 staff can no longer guarantee payment by the 15th of the month for any invoices received after the 5th of the each month. Thank you for your understanding.



Provider Specialist Update

Starting immediately Providers should start directing all inquiries regarding copay delinquencies, enrollment questions, schedule questions, etc. to your Provider Specialist. The Provider Specialists will work with the Family Specialist for the client to get your questions answered. You can contact your Provider Specialist at:

- Abigail Araujo - aaaraujo@cscinc.org or at 484-898-8113 (Relative Providers)
- Damaris Nieves - dnieves@cscinc.org or at 484-602-4285 (Family and Group Providers)
- Susan Ritter - susanr@cscinc.org or at 484-274-3852 (Centers)

Region 14 Provider Supports

Quality Coach Office Days

Are you thinking about moving up in STARS and need some extra assistance? Do you need assistance with your Keystone STARS Renewal or Designation?

Your Quality Coach is here to help! Quality Coaches are



available to answer questions throughout the week and are in the office weekly to meet one on one to support you through your STARS journey. Click on the flyer below for dates of when your Quality Coach will in the office. Please don't hesitate to email, call or schedule a time to meet.

- [Quality Coach Office Days - November 2023](#)

Fall Professional Development Opportunities

Join the ELRC 14 Quality Coaches for upcoming, in-person professional development sessions this fall. All professional development is open to program Directors, Family Providers and teaching staff **FREE** of charge.

- November 3rd from 10:00 am to 12:00 pm -
"Teaching Practices that Inspire Children to Learn"
- November 21st from 12:30 pm to 2:30 pm
"Enhancing Your Family Handbook"

Location:

Community Services for Children
Fowler Building, Training Institute
1520 Hanover Avenue
Allentown PA, 18109

Click on the flyer below to register:

- [Fall 2023 Professional Development](#)

Get to Know Keystone STARS

Are you a STAR 1 program? If so, please join the ELRC 14 for an informational webinar to learn about the basics of Keystone STARS. Keystone STARS has evolved over the years and many components have changed. We will be sharing information on the STARS structure, benefits and incentives, STARS Performance Standards, the designation process, and how your Quality Coach can help you. Several dates and times are available, click on the flyer below for more information.

- [Get to Know STARS](#)

ELRC Updates

CCW Reminders

- As we approach the holiday season, please take a moment to review the closures you submitted to ensure they are still correct. If there are any changes or updates, please contact your Provider Specialist.
- Any changes to a child's care schedule should be reported to your Provider Specialist prior to the submission of your invoice.



Co-payment Delinquencies

- It is important to report delinquent copayments timely to the ELRC. Per Appendix A of the ELRC Certified Provider Agreement, providers must report a delinquent co-payment to the ELRC on the business day following the day the co-payment becomes delinquent. For example, if a co-pay is not paid by Friday for that service week, the delinquency must be reported on your next business day, which is typically Monday.
- Please note, delinquencies can only be reported for copayments. Delinquencies regarding additional fees your program charges must be

handled privately with the family. If you are aware that a family is currently under adverse action, please urge them to resolve this as soon as possible in order to maintain their eligibility and prevent any disruptions in care. When delinquent co-pays are resolved, please notify us so we can satisfy the client's adverse action. When families are seeking to transfer enrollments, an ELRC Family Specialist will contact you to verify if that family is current with their co-payment before authorizing the transfer.

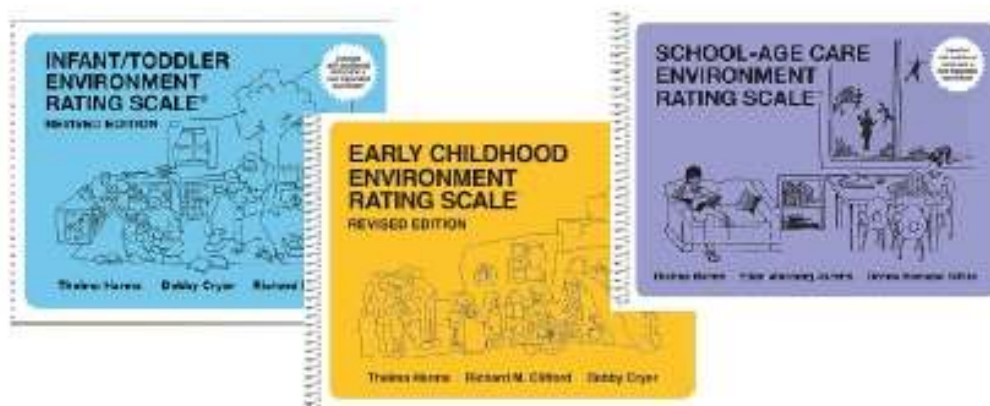
Program Observation Instrument Virtual Fair

Did you know that Pennsylvania has over 10 different approved Program Observation Instruments? Most providers are familiar with the Environmental Rating Scale or ERS. But many other options are available to assist leaders in rating program quality including interactions, business practices, inclusive child supports and other classroom environments.

Join us for our virtual POI fair to learn about these options and select a tool to meet your program needs. Click on the flyer below to learn more about these options and to register for the virtual fair.

November 14th
1:00-3:00 pm ~ English
7:00-8:30 pm ~ Spanish

[Program Observation Instrument ~ English](#)
[Program Observation Instrument ~ Spanish](#)



Child Development Associate (CDA) Expiration

CDA's do have an expiration date. As your staff complete their annual PD Registry profile review, they will be prompted to review their CDA qualification. If their CDA has expired, and they did not complete credit-bearing course work to achieve their CDA, their Career Pathway level will drop.

Create a plan to periodically review your staff's Career Pathway and work with your Quality Coach to ensure you have enough credentialed staff to maintain your STAR level.

The Professional Development Organization is also available to provide support to help staff by removing barriers to earning higher credentials and degrees. By

funding no-cost tuition and numerous supports to qualifying applicants, many prohibitive barriers are removed. Removing these barriers to education will lead to greater numbers of individuals who will earn a Child Development Associate Credential (CDA) and associate or bachelor's degrees in early childhood education. In turn, this will build and support the pipeline of professionals.

Visit the PDO page here: [About Us » Early Childhood Education Professional Development Organization at PASSHE \(ecepdo.org\)](https://ecepdo.org)

Strengthening Business Practices for Child Care Programs

The National Center on Early Childhood Quality Assurance is offering a new curriculum series, **Strengthening Business Practices for Child Care Programs**.

This FREE training includes content and activities that are designed to strengthen child care providers' foundational knowledge of sound fiscal management and business operations.

The series contains four modules of business practice content:

- Budgets, Projections, and Planning
- Financial Reports and Internal Controls
- Marketing for Child Care Programs
- Staff Recruitment and Retention for Center-based Child Care Programs

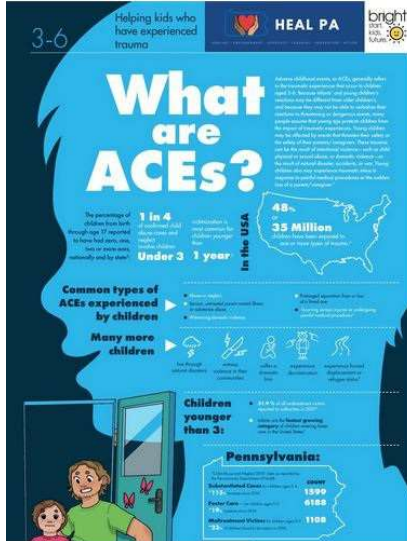
This series is available in both English & Spanish and for Center & Family based providers! Modules run now through December. Click on the flyer below and register today!

[Strengthening Business Practices for Child Care - English](#)

[Strengthening Business Practices for Child Care - Spanish](#)



**FREE Poster Series for Helping Kids Who
Have Experienced Trauma**



Early childhood programs can order a free set of posters from Heal PA and Bright Start. Bright Kids. Bright Futures. Each set contains four posters focusing on ages 0-3 and 3-6 years which feature information on:

- What are ACEs?
- Signs and Symptoms of Traumatic Stress
- Children can cope with trauma and build resiliency
- Tips for Educators: Taking care of yourself

Early childhood educators and partners can display the posters where families and staff can view the information. Posters are available at no cost and available in English and Spanish.

Supplies are limited. Click [here](#) to view/download the posters OR click [here](#) to order a set of the posters.

Parent Project Podcast

Community Services for Children has been hosting the Parent Project Podcast to engage families in areas of common concern for parents. Experts provide perspectives on topics of health & safety, mental health, child transition and other important subjects.

Please consider sharing these podcasts with the families in your program!

This month, we are joined by Mike Daniels, retired social worker, as he shares about how to foster attachment with your new baby. Click [here](#) to listen.



Have you ordered your FREE CO Detector?

All licensed providers in PA are eligible to receive two Carbon Monoxide detectors. CO alarms are designed to warn you of any unusual build-up of carbon monoxide in your facility and should be installed at a minimum, of one on every floor. Carbon monoxide can come from appliances, heating sources and even vehicles idling close to your building.

To request your FREE detectors, see the flyer below.

- [Carbon Monoxide Detector Request](#)
-

The Impact of Stress on Oral Health

Stress is a reaction to a physical, psychological, or emotional demand. Everyone has felt stress at one time or another. Some stress is good because it pushes us to do things that are challenging and meet the demands of daily life. However, too much stress is not good and can have negative short and long-term effects on our health, including our oral health.

Long-term stress can cause problems with your mouth, teeth, and gums. These problems can include:

- Sores in or around the mouth.
- Teeth clenching and grinding.
- Tooth decay and gum disease.

Here are some tips to help you manage stress:

- Eat healthy foods.
- Take care of your mouth.
- Seek treatment for unhealthy habits.
- Practice relaxation techniques.
- Talk to someone.

This [Brush Up on Oral Health Tip Sheet](#) describes how stress affects oral health and offers more detailed tips to help you manage stress.

Early Childhood Education Linkage System (ECLS) Office Hours

The American Academy of Pediatrics ECLS Program is Now Offering Virtual Office Hours! These Office Hours will be used for addressing health and safety questions and concerns in your program. Please click on this [flyer](#) for more information regarding the Office Hours, including appointment bookings. Please reach out to ecels@paaap.org or cmanfre@paaap.org if you have any questions!

Want to add staff or other members of your team to this newsletter? Email estair@cscinc.org and specify which Regional Newsletter you would like

and requests will be added to next month's distribution.

[Visit ELRC Region 14](#)

Community Services for Children | elrc14@cscinc.org | www.cscinc.org

Connect with us



Community Services for Children | 1520 Hanover Ave, Allentown, PA 18109

[Unsubscribe pcho@cscinc.org](#)

[Update Profile](#) | [Constant Contact Data Notice](#)

Sent by estair@cscinc.org powered by



Try email marketing for free today!