

Community Services for Children Provider Link Newsletter ~ ELRC Region 12 November 2023

Serving Carbon, Lackawanna, Monroe, Pike, Wayne and Susquehanna counties

To distribute this newsletter to others, copy and share this link:

Region 12 Updates

ELRC Offices Closed

Please note that the ELRC offices will be closed on Friday, November 11th for a staff professional development day. Offices will reopen to the public on Monday, November 13th.

THERE IS
always
SOMETHING TO BE
thankful for

As we take a moment this time of year to reflect on what we are thankful for, know that everyone from the Early Learning Resource Center appreciates all you do for the children and families in your care. In spite of challenges, the ECE community continues to serve children and give them a safe place to be nurtured, to learn and to thrive.



The Early Learning Resource Center would like to welcome the following new programs to our region! We look forward to working with you. ELRC staff are here to assist you with your participation in Child Care Works and Keystone STARS, and to provide you with local resources and referrals.

- Little Sprouts Academy Co. - Archbald
- Little People LLC - East Stroudsburg
- Beth Shalom Academy - Scranton
- Grammy's Place Daycare LLC - Brackney
- Lehigh Valley Children's Centers at St. Joes - Jim Thorpe

Free Screenings for Monroe County

The Pocono Mountains United Way, in partnership with AmeriHealth Caritas, is proud to offer free dental and vision screenings for children ages birth to five living in Monroe County. Free screenings will be available in November. Please click [here](#) to see available dates, times, and location. Pre-registration is strongly encouraged! Please reach out to Roxanne Powell at Roxanne@poconounitedway.org or (610) 417-0684 with any questions.



Region 12 Provider Supports

Directors Network

Please join us on Friday, November 17th at 1:00 PM for an in-depth look at the 2023 Keystone STARS Performance Standards. Programs of all STAR levels are highly encouraged to attend to learn about the enhancements and updates that have been made. Please come prepared with any questions you may have... we hope to see you there!

- [Director's Network Flyer](#)



Director's Bootcamp

Join Quality Coach, Deb Galloway, for Director Boot Camp on Wednesday, November 8, 2023! This Director Boot Camp session will focus on how to develop and enhance your business practices. Click the flyer below for more information and to register now. Please contact Deb Galloway at dgalloway@cscinc.org with any questions.

- [Director's Boot Camp Flyer](#)

Teacher Talks

This month we will be kicking off our "Teacher Talks" cohort. This will be a network of classroom teachers who will work together to share ideas, troubleshoot challenges and grow together as educators. Please note that the ELRC staff will lead all meetings and there will be ground rules in place to protect the confidentiality of your program. Please see the registration link on the flyer below. Please contact Lynda Castro with any questions at lycastro@cscinc.org.

- [Teacher Talks Flyer](#)

CCW Reminders

- As we approach the holiday season, please take a moment to review the closures you submitted to ensure they are still correct. If there are any changes or updates, please contact your Provider Specialist.
- Any changes to a child's care schedule should be reported to your Provider Specialist prior to the submission of your invoice.



Co-payment Delinquencies

- It is important to report delinquent copayments timely to the ELRC. Per Appendix A of the ELRC Certified Provider Agreement, providers must report a delinquent co-payment to the ELRC on the business day following the day the co-payment becomes delinquent. For example, if a co-pay is not paid by Friday for that service week, the delinquency must be reported on your next business day, which is typically Monday.
- Please note, delinquencies can only be reported for copayments. Delinquencies regarding additional fees your program charges must be handled privately with the family. If you are aware that a family is currently under adverse action, please urge them to resolve this as soon as possible in order to maintain their eligibility and prevent any disruptions in care. When delinquent co-pays are resolved, please notify us so we can satisfy the client's adverse action. When families are seeking to transfer enrollments, an ELRC Family Specialist will contact you to verify if that family is current with their co-payment before authorizing the transfer.

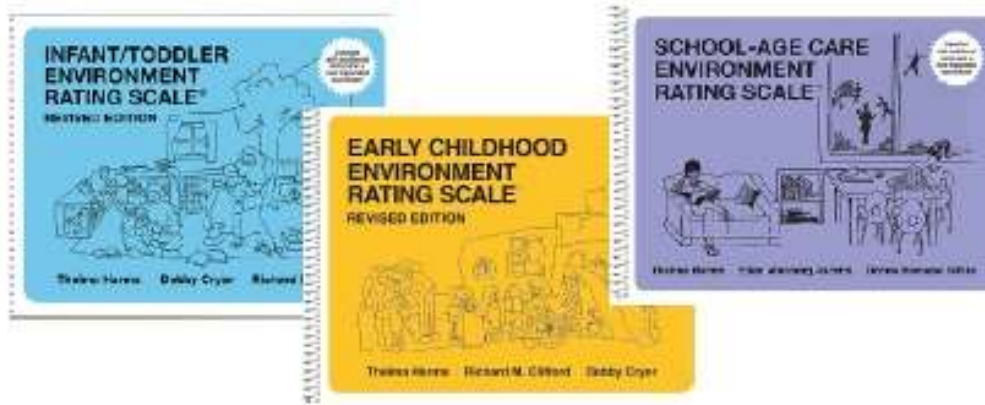
Program Observation Instrument Virtual Fair

Did you know that Pennsylvania has over 10 different approved Program Observation Instruments? Most providers are familiar with the Environmental Rating Scale or ERS. But many other options are available to assist leaders in rating program quality including interactions, business practices, inclusive child supports and other classroom environments.

Join us for our virtual POI fair to learn about these options and select a tool to meet your program needs. Click on the flyer below to learn more about these options and to register for the virtual fair.

*November 14th
1:00-3:00 pm ~ English
7:00-8:30 pm ~ Spanish*

[Program Observation Instrument ~ English](#)
[Program Observation Instrument ~ Spanish](#)



Child Development Associate (CDA) Expiration

CDA's do have an expiration date. As your staff complete their annual PD Registry profile review, they will be prompted to review their CDA qualification. If their CDA has expired, and they did not complete credit-bearing course work to achieve their CDA, their Career Pathway level will drop.

Create a plan to periodically review your staff's Career Pathway and work with your Quality Coach to ensure you have enough credentialed staff to maintain your STAR level.

The Professional Development Organization is also available to provide support to help staff by removing barriers to earning higher credentials and degrees. By funding no-cost tuition and numerous supports to qualifying applicants, many prohibitive barriers are removed. Removing these barriers to education will lead to greater numbers of individuals who will earn a Child Development Associate Credential (CDA) and associate or bachelor's degrees in early childhood education. In turn, this will build and support the pipeline of professionals.

Visit the PDO page here: [About Us » Early Childhood Education Professional Development Organization at PASSHE \(ecepdo.org\)](http://ecepdo.org)

Strengthening Business Practices for Child Care Programs

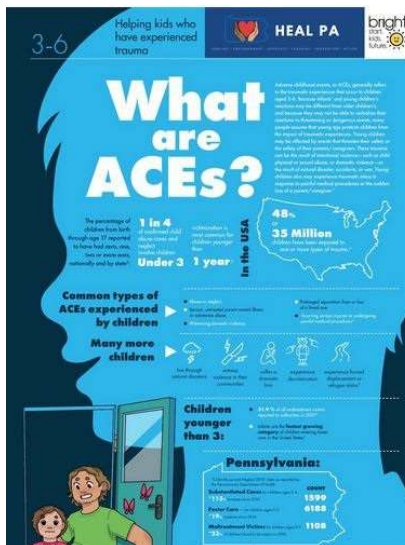
The National Center on Early Childhood Quality Assurance is offering a new curriculum series, **Strengthening Business Practices for Child Care Programs**.

This FREE training includes content and activities that are designed to strengthen child care providers' foundational knowledge of sound fiscal management and business operations.

The series contains four modules of business practice content:

- Budgets, Projections, and Planning
- Financial Reports and Internal Controls
- Marketing for Child Care Programs
- Staff Recruitment and Retention for Center-based Child Care Programs

This series is available in both English & Spanish and for Center & Family based providers! Modules run now through December. Click on the flyer below and register today!



FREE Poster Series for Helping Kids Who Have Experienced Trauma

Early childhood programs can order a free set of posters from Heal PA and Bright Start. Bright Kids. Bright Futures. Each set contains four posters focusing on ages 0-3 and 3-6 years which feature information on:

- What are ACEs?
- Signs and Symptoms of Traumatic Stress
- Children can cope with trauma and build resiliency
- Tips for Educators: Taking care of yourself

Early childhood educators and partners can display the posters where families and staff can view the information. Posters are available at no cost and available in English and Spanish. Supplies are limited. Click [here](#) to view/download the posters OR click [here](#) to order a set of the posters.

Parent Project Podcast

Community Services for Children has been hosting the Parent Project Podcast to engage families in areas of common concern for parents. Experts provide perspectives on topics of health & safety, mental health, child transition and other important subjects.

Please consider sharing these podcasts with the families in your program!

This month, we are joined by Mike Daniels, retired social worker, as he shares about how to foster attachment with your new baby. Click [here](#) to listen.



Health & Safety

Have you ordered your FREE CO Detector?

All licensed providers in PA are eligible to receive two Carbon Monoxide detectors. CO alarms are designed to warn you of any unusual build-up of carbon monoxide in your facility and should be installed at a minimum, of one on every floor. Carbon monoxide can come from appliances, heating sources and even vehicles idling close to your building.

To request your FREE detectors, see the flyer below.

- [Carbon Monoxide Detector Request](#)

The Impact of Stress on Oral Health

Stress is a reaction to a physical, psychological, or emotional demand. Everyone has felt stress at one time or another. Some stress is good because it pushes us to do things that are challenging and meet the demands of daily life. However, too much stress is not good and can have negative short and long-term effects on our health, including our oral health.

Long-term stress can cause problems with your mouth, teeth, and gums. These problems can include:

- Sores in or around the mouth.
- Teeth clenching and grinding.
- Tooth decay and gum disease.

Here are some tips to help you manage stress:

- Eat healthy foods.
- Take care of your mouth.
- Seek treatment for unhealthy habits.
- Practice relaxation techniques.
- Talk to someone.

This [Brush Up on Oral Health Tip Sheet](#) describes how stress affects oral health and offers more detailed tips to help you manage stress.

Want to add staff or other members of your team to this newsletter? Email estair@cscinc.org and specify which Regional Newsletter you would like and requests will be added to next month's distribution.

[Visit ELRC Region 12](#)

Community Services for Children | elrc12@cscinc.org | www.cscinc.org

Connect with us



Community Services for Children | 1520 Hanover Ave, Allentown, PA 18109

[Unsubscribe pcho@cscinc.org](#)

[Update Profile](#) | [Constant Contact Data Notice](#)

Sent by estair@cscinc.org powered by



Try email marketing for free today!