

Community Services for Children Provider Link Newsletter ~ ELRC Region 11 November 2023

Serving Bradford, Sullivan, Wyoming, Luzerne, Columbia & Montour counties

To distribute this newsletter to others, copy and share this link:

Region 11 Updates

ELRC Offices Closed

Please note that the ELRC offices will be closed on Friday, November 11th for a staff professional development day. Offices will reopen to the public on Monday, November 13th.



As we take a moment this time of year to reflect on what we are thankful for, know that everyone from the Early Learning Resource Center appreciates all you do for the children and families in your care. In spite of challenges, the ECE community continues to serve children and give them a safe place to be nurtured, to learn and to thrive.



The Early Learning Resource Center would like to welcome the following new programs to our region! We look forward to working with you. ELRC staff are here to assist you with your participation in Child Care Works and Keystone STARS, and to provide you with local resources and referrals.

- All My Children Daycare and Nursery School - Forty-Fort
- Bear Creek Community Charter School - Bear Creek Twp.
- Bloom Early Education Centers Inc. - Edwardsville
- Heavenly Home Daycare - Hazleton
- KCE Champions LLC at West Hazleton EMS - West Hazleton
- Magic World Child Care Center - Hanover Township
- Sandra's Day Care Corp. - West Hazleton
- Sunny Side Daycare LLC - Hazle Township

Annual Kick Off Meetings

Thank you to all who attended one of the ELRC Annual Kick Off meetings! It was a pleasure to have so many of you join us in-person. During these meetings we discussed important updates regarding Keystone STARS, Child Care Works and ELRC provider supports.

If you were unable to attend the in-person meeting, we have one more chance for you to attend a **“virtual” Kick Off Meeting via ZOOM** this month. Our virtual meeting will be on Wednesday, **November 8th**, at **6:00 pm**.

Please click [here](#) for more information and to register now!

FREE Professional Development

ELRC Quality Coaches will be offering Professional Development trainings in November. This is a great opportunity to receive **free PQAS** trainings.

Dana DeVito will present **“Understanding the Strengthening Families Protective Factors Framework”**. This training is a research-informed approach to increase family strengths, enhance child development, and reduce the likelihood of child abuse and neglect. The training will be held in person on **November 6th**, from 5:45 pm to 8:45 pm at Trinity Early Learning Center, Danville, PA. Click [here](#) for details and registration.

“Positive Discipline” will be presented by Michelle Gunshannon on **November 21st** from 5:00 pm to 7:00 pm at the ELRC Region 11 Wilkes-Barre Office. You will learn to analyze the five criteria for positive discipline, create a classroom and care setting that provides support to children's sense of belonging and modify learning environments to promote success. Click [here](#) for details and registration.

Region 12 Provider Supports

Directors Network Roundtable

The Region 11 Director's Network Roundtable meets

monthly to share ideas and resources and to build partnerships in the child care community. Join us on Thursday, **November 16th** at 1:00 pm via Zoom for a review and discussion of the revised 2023 STARS Standards.

Click the link below to register.

- [Director's Network Flyer](#)



Coffee Talk

Fawn Unger, Quality Coach, is available the second Thursday of each month to provide any support needed on renewals, designations, evidence uploading, the PD Registry, Career Pathways, Keystone STARS Standards or to answer any other general questions you may have. Click the flyer below for times and to join a session.

- [Coffee Talk Flyer](#)

Move Up to STAR 3 or 4 Cohort

Review the designation process with Dana Devito, Quality Coach, and develop a meaningful plan to implement the Keystone STARS Standards. Resources and strategies will be part of each session. Click the flyer below for dates/times and to register.

- [STAR 3 & 4 Cohort](#)

Quality Coach Monthly Calendar

Print out a copy of the Quality Coach Monthly Calendar for a quick reference of all regional support activities. Remember, **your Quality Coach has office hours** scheduled on the calendar and is available to meet with you and provide any needed supports.

- [November 2023 - Provider Supports](#)

ELRC Updates

CCW Reminders

- As we approach the holiday season, please take a moment to review the closures you submitted to ensure they are still correct. If there are any changes or updates, please contact your Provider Specialist.
- Any changes to a child's care schedule should be reported to your Provider Specialist prior to the submission of your invoice.



Co-payment Delinquencies

- It is important to report delinquent copayments timely to the ELRC. Per Appendix A of the ELRC Certified Provider Agreement, providers must report a delinquent co-payment to the ELRC on the business day following the day the co-payment becomes delinquent. For example, if a co-pay is not paid by Friday for that service week, the delinquency must be reported on your next business day, which is typically Monday.
- Please note, delinquencies can only be reported for copayments. Delinquencies regarding additional fees your program charges must be handled privately with the family. If you are aware that a family is currently under adverse action, please urge them to resolve this as soon as

possible in order to maintain their eligibility and prevent any disruptions in care. When delinquent co-pays are resolved, please notify us so we can satisfy the client's adverse action. When families are seeking to transfer enrollments, an ELRC Family Specialist will contact you to verify if that family is current with their co-payment before authorizing the transfer.

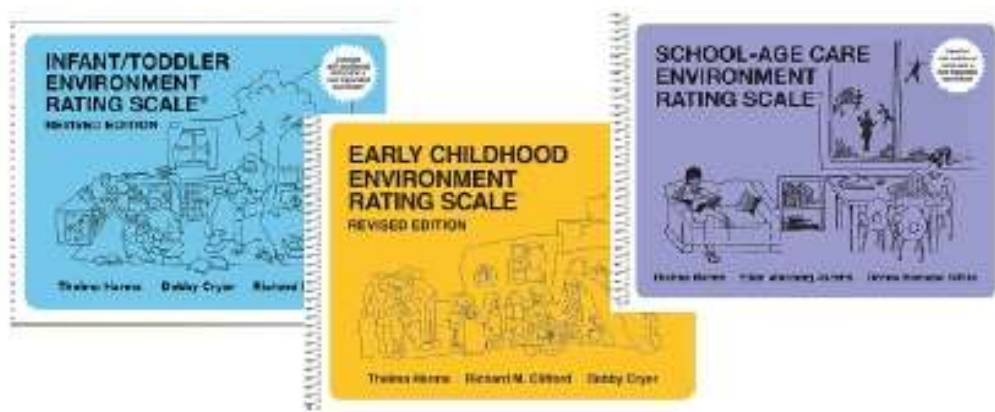
Program Observation Instrument Virtual Fair

Did you know that Pennsylvania has over 10 different approved Program Observation Instruments? Most providers are familiar with the Environmental Rating Scale or ERS. But many other options are available to assist leaders in rating program quality including interactions, business practices, inclusive child supports and other classroom environments.

Join us for our virtual POI fair to learn about these options and select a tool to meet your program needs. Click on the flyer below to learn more about these options and to register for the virtual fair.

*November 14th
1:00-3:00 pm ~ English
7:00-8:30 pm ~ Spanish*

[Program Observation Instrument ~ English](#)
[Program Observation Instrument ~ Spanish](#)



Child Development Associate (CDA) Expiration

CDA's do have an expiration date. As your staff complete their annual PD Registry profile review, they will be prompted to review their CDA qualification. If their CDA has expired, and they did not complete credit-bearing course work to achieve their CDA, their Career Pathway level will drop.

Create a plan to periodically review your staff's Career Pathway and work with your Quality Coach to ensure you have enough credentialed staff to maintain your STAR level.

The Professional Development Organization is also available to provide support to help staff by removing barriers to earning higher credentials and degrees. By funding no-cost tuition and numerous supports to qualifying applicants, many prohibitive barriers are removed. Removing these barriers to education will lead

to greater numbers of individuals who will earn a Child Development Associate Credential (CDA) and associate or bachelor's degrees in early childhood education. In turn, this will build and support the pipeline of professionals.

Visit the PDO page here: [About Us » Early Childhood Education Professional Development Organization at PASSHE \(ecepdo.org\)](#)

Strengthening Business Practices for Child Care Programs

The National Center on Early Childhood Quality Assurance is offering a new curriculum series, **Strengthening Business Practices for Child Care Programs**.

This FREE training includes content and activities that are designed to strengthen child care providers' foundational knowledge of sound fiscal management and business operations.

The series contains four modules of business practice content:

- Budgets, Projections, and Planning
- Financial Reports and Internal Controls
- Marketing for Child Care Programs
- Staff Recruitment and Retention for Center-based Child Care Programs

This series is available in both English & Spanish and for Center & Family based providers! Modules run now through December. Click on the flyer below and register today!

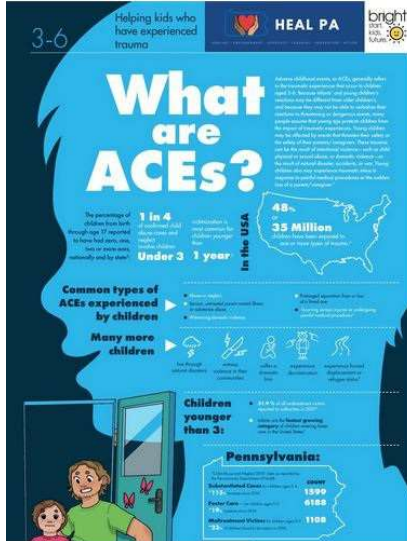
[Strengthening Business Practices for Child Care - English](#)

[Strengthening Business Practices for Child Care - Spanish](#)



FREE Poster Series for Helping Kids Who Have Experienced Trauma

Early childhood programs can order a free set of



posters from Heal PA and Bright Start. Bright Kids. Bright Futures. Each set contains four posters focusing on ages 0-3 and 3-6 years which feature information on:

- What are ACEs?
- Signs and Symptoms of Traumatic Stress
- Children can cope with trauma and build resiliency
- Tips for Educators: Taking care of yourself

Early childhood educators and partners can display the posters where families and staff can view the information. Posters are available at no cost and available in English and Spanish. Supplies are limited. Click [here](#) to view/download the posters OR click [here](#) to

order a set of the posters.

Parent Project Podcast

Community Services for Children has been hosting the Parent Project Podcast to engage families in areas of common concern for parents. Experts provide perspectives on topics of health & safety, mental health, child transition and other important subjects.

Please consider sharing these podcasts with the families in your program!

This month, we are joined by Mike Daniels, retired social worker, as he shares about how to foster attachment with your new baby. Click [here](#) to listen.



Have you ordered your FREE CO Detector?

All licensed providers in PA are eligible to receive two Carbon Monoxide detectors. CO alarms are designed to warn you of any unusual build-up of carbon monoxide in your facility and should be installed at a minimum, of one on every floor. Carbon monoxide can come from appliances, heating sources and even vehicles idling close to your building.

To request your FREE detectors, see the flyer below.

- [Carbon Monoxide Detector Request](#)
-

The Impact of Stress on Oral Health

Stress is a reaction to a physical, psychological, or emotional demand. Everyone has felt stress at one time or another. Some stress is good because it pushes us to do things that are challenging and meet the demands of daily life. However, too much stress is not good and can have negative short and long-term effects on our health, including our oral health.

Long-term stress can cause problems with your mouth, teeth, and gums. These problems can include:

- Sores in or around the mouth.
- Teeth clenching and grinding.
- Tooth decay and gum disease.

Here are some tips to help you manage stress:

- Eat healthy foods.
- Take care of your mouth.
- Seek treatment for unhealthy habits.
- Practice relaxation techniques.
- Talk to someone.

This [Brush Up on Oral Health Tip Sheet](#) describes how stress affects oral health and offers more detailed tips to help you manage stress.

Want to add staff or other members of your team to this newsletter? Email estair@cscinc.org and specify which Regional Newsletter you would like and requests will be added to next month's distribution.

[Visit ELRC Region 11](#)

Community Services for Children | elrc11@cscinc.org | www.cscinc.org

Connect with us



[Unsubscribe pcho@cscinc.org](mailto:pcho@cscinc.org)

[Update Profile](#) [Constant Contact Data
Notice](#)

Sent by estair@cscinc.org powered by



Try email marketing for free today!